

Coldline SDC98 102" Refrigerated Curved Glass Meat Deli Case with Rear Storage

FEATURES

- 102" Curved Glass Meat Deli Case
- Auto Condensation Evaporating
- 7.2" Deep SS304 Rear Work Surface
- Lift Up Tempered Front Glass
- Rear Refrigerated Storage
- Brilliant LED Lighting
- Leveling Feet and 2.5" Casters Included
- Automatic Defrost
- Tempered glass inside removable shelf (**non-refrigerated**)
- Glass shelf temperature not suitable for meat display
- Self-contained Refrigeration
- Grey Painted Steel Exterior
- Bottom-mounted Compressor
- Digital Controller and Display

Featuring a 1/2 HP refrigeration system and R290 refrigerant, this deli display case unit is perfect for showcasing your products to your customers in your restaurant, diners, and deli.

- cETLus Listed
 - ETL Sanitation Listed
- Certified to NSF Standard



USR Brands is a US supplier of premium quality commercial cooking, refrigeration and food preparation equipment. Our aim is simple. Produce industry-leading commercial restaurant equipment at reasonable prices, and back it all up with an easy to understand, no nonsense warranty that people can count on.

TECHNICAL DATA

DIMENSIONS

Exterior Dimensions	101.6"L x 33.5"D x 47.2"H
Display Area	16 sq.ft
Rear Storage Capacity	6 cu.ft (98.4"L x 13.6"D)
Packaging Dimensions	107"L x 38.7"D x 50.3"H
Unit Weight	605 lb.
Shipping Weight	712 lb.

ELECTRICAL

Voltage	115
Hertz	60
Phase	1
Amps	6.8
Plug Type	NEMA 5-15P
Power Cord Length	79"

COOLING

Temperature Range	33°F to 40°F
Refrigerant	R290
Max. Ambient Temp	80°F
Defrosting	Automatic
Temperature Controller	Digital
Horsepower	1/2 HP

CONSTRUCTION

Exterior Material	Pre-painted Steel
Interior Material	Pre-painted Steel
Shelf Quantity	1
Shelf Material	Glass
Shelf Size	97" x 7.9" x 0.5"
Interior Light	L.E.D
Mobility Wheels/Casters	(4) Qty: 2 with brakes, 2 without

TECHNICAL DRAWING

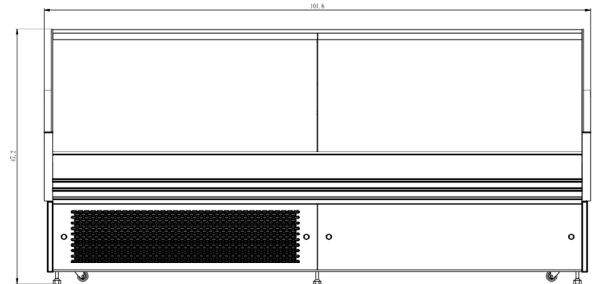
MODEL: **SDC98**

MFR ITEM #:

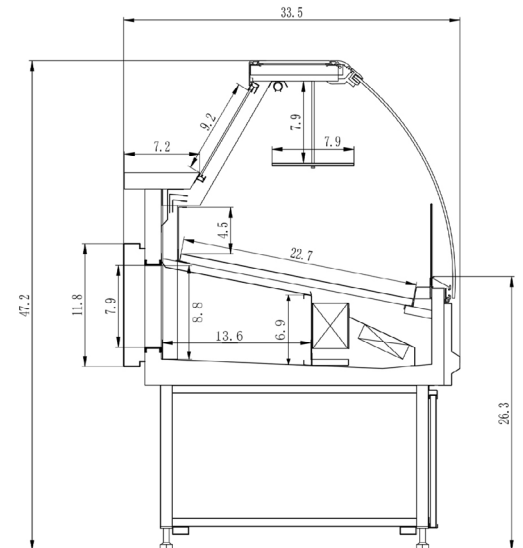


NEMA 5-15P

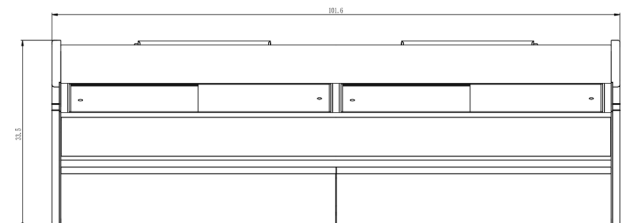
FRONT VIEW



SIDE VIEW



TOP VIEW



BACK VIEW

