

## Prepline PWS 14"D Stainless Steel Wall-Mount Shelf with Pot Rack



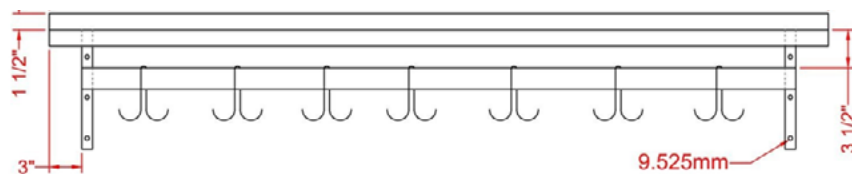
## STANDARD FEATURES

- Wall Mounted Pot Rack
- Rolled Front Edge Design
- Durable Stainless Steel Construction
- Removable, Double-pronged Hooks Included
- Anti-corrosion, Water-proof
- Support brackets included
- Easy to clean and Practical
- Easy to install
- Predrilled Screw Holes for Mounting
- 18 Gauge / 430 Stainless Steel Shelf

## TECHNICAL DATA

Model	Length	Width	Height	Capacity	Hooks Included
PWS-1436-PR	36"	14"	11"	300 LBS.	3
PWS-1448-PR	48"	14"	11"	345 LBS.	4
PWS-1460-PR	60"	14"	11"	395 LBS.	5
PWS-1472-PR	72"	14"	11"	395 LBS.	6

FRONT



## SIDE

